

盛仕达钢铁股份有限公司
SHENESTAR STEEL INDUSTRIES CORPORATION

湖南佰仕达钢管有限公司
BESTAR STEEL CO., LTD



盛仕达钢铁股份有限公司
SHENESTAR STEEL INDUSTRIES CORPORATION
湖南佰仕达钢管有限公司
BESTAR STEEL CO., LTD

Tel: 0086-731-88678501 88678532 88678537
88678538 88700080 88700081

Fax: 0086-731-88678531
E-mail: sales@bestarpipe.com

Head Office Address: 22nd Floor Royal Wing Tower, Longchang
Intergenerational Building, No. 9 Xiangfu Road, Yuhua
District, Changsha, Hunan, China
Http: www.bestarpipe.com



无缝钢管
SMLS PIPE
CATALOGUE





善待客户，服务创新
善待员工，培养人才

customer well-treated, service innovated,
employee kindly-treated and talents cultivated.



目录

CONTENT



CONTENT

- 公司介绍 Introduction
- 工厂设备 Facilities & Equipments
- 生产工艺流程 Production Process Flow Chart
- 产品介绍 Product Introduction
- 质量保证 Quality Assurance
- 项目案例 Projects
- 公司架构 Organization Framework
- 联系方式 Contact us



公司介绍 INTRODUCTION

盛仕达钢铁股份

盛仕达钢铁股份有限公司从1993年开始专注于钢铁产业，致力于为客户提供高技术含量和附加值的钢铁产品。同时公司还开发了碳素钢和特种钢各生产线。公司主营涉及三大产业：钢铁、高科技产业和国际贸易。我们的钢铁产品不仅适应国内市场的需求，而且受到国外市场的广泛欢迎。我们已经出口于全世界40多个国家和地区。我们公司拥有强大的营销网络，产品主要应用于汽车、家用电器、石油化学产品、制药、能源、交通、机械制造和航空航天工程、船舶以及电子仪器等领域。

公司拥有无锡钢管厂生产油气钢管、压力容器用管、机械加工用管等各种用途的碳钢、合金钢无缝钢管，公司拥有19条冷拔钢管生产线，4条热轧钢管生产线，4条热扩钢管生产线，4条涂塑管加工生产线，1条钻杆加工生产线，2条制管热处理生产线。无缝钢管生产线规格范围壁厚：8-1200mm，壁厚为1-200mm，年生产制管能力55万吨，石油专用管加工生产能力20万吨，热处理生产能力15万吨。

2000年总公司投资兴建了：114、1219、1600等3种HPFW直缝高频电阻焊管生产线，1613、1422等2条JCOE大口径直缝双壁埋弧焊SAWL钢管生产线，1219-1433高频率SAWH横波埋弧焊钢管生产线，FBE/2PE/3PP/3PE内外防腐生产线两条，焊管生产规格范围：10.3-1433mm，壁厚为1-50mm，年生产各类焊管能力50万吨，防腐管年生产能力200万平方米。进一步完善了产品结构，提升了产品科技含量，有效提升了企业产品的核心竞争力，为企业长远发展开拓出更广阔的空间。

佰仕达

佰仕达钢管有限公司是盛仕达钢铁股份有限公司旗下专业从事钢管出口业务的外贸企业，为您提供各种规格高性价比的无缝和焊接钢管。佰仕达已经建立了广泛的国际销售网络，客户遍及中东、东南亚、非洲及澳洲等地区。我们是中国主要的石油专用管（OCTG）和石油天然气输送用管规格的出口商之一。近年来我们的出口总量一直保持中国湖南省外贸市场出口之冠。佰仕达将会通过不断扩展国际市场以实现持续增长。我们的目标是为客户提供专业优质的服务，并成为行业内的最可靠的合作伙伴。我们期待与您合作！

About Shinestar Industries Corporation

Shinestar Steel Industries Corporation specializes in the line of iron and steel since 1993. The company produces premium iron and steel products with high technology contents and added value. Besides, we have fostered two major product lines—carbon steel and special steel. Our company mainly engages in three industries, iron and steel, hi-tech industries, and international trade. These steel products not only cater to the domestic demands but also enjoy overseas market welcome. We have exported to more than forty countries and regions all over the world. The company has extensive marketing network for different fields such as automobile, household appliances, petrochemical, manufacture of machinery, energy, transportation, metalwork, aeronautics and astronautics, nuclear power and electronic instruments.

The seamless pipe factories under Shinestar mainly produce various carbon seamless steel pipes, alloy seamless steel pipes, such as Oil and Gas Transmission Pipe, Pressure Use Pipes, Mechanical Tubing and so on. The company has 19 cold draw steel pipes lines, 4 hot rolled steel pipes lines, 4 hot expansion steel pipes lines, 4 tubing and casing processed steel pipes lines, 1 drilling pipes processed lines, 2 steel pipes heat treatments lines. The specification of seamless steel pipes outer diameter is: 8-1200mm, wall thickness is: 1-200mm. The annual production capacity is 550 000 tons, tubing and casing processed pipes is 250 000 tons and the heat treatment pipes is 150 000 tons.

After 2005 the company founded 3 HPFW lines of specification 114, 1219, 1600, 2 JCOE SAWL lines of specification 1613, 1422 And some SAWH lines of specification 1219-1433, 3 inner and outer anti-corrosion lines of FBE/2PE/3PP/3PE. The outer diameter of welded pipes is: 10.3-1433, the wall thickness is 1-50mm. The annual production capacity of every kind welded pipes is 500 000 tons, and the anti-corrosion annual capacity is 2000 000 square meters. These options improve the production structure, enhance the production's scientific and technology, and avoid the low-end products' fierce competition and create a broader space for our enterprises long-term and far-reaching development.

About Bestar

As one of the subsidiary companies under Shinestar Steel Industries Corporation, Bestar is a dedicated provider and exporter for high performance-price ratio welded and seamless steel pipes covering various steel grades. Bestar has set up extensive international sales network covering Middle East, Southeast Asia, South Africa, Europe, the Americas etc. As one of the major exporters of OCTG and line pipe for crude oil and natural gas delivery in China, Bestar's exports of steel pipe has remained top in Hunan Province for years. And we will keep growing and expanding the global market. Our goal is to provide clients with professional & customized service, and become the most reliable solution in steel pipe trade. We look forward to co-operating with you!



工厂设备
Facilities & Equipments

热轧生产线 >>>
Hot Rolling Production Line



冷拔/冷轧生产线 >>>
Cold-drawn/Cold-rolled Production Line

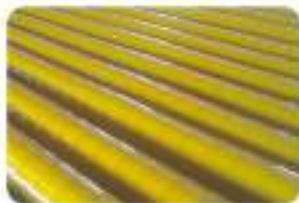




钻杆加工生产线 >>>
Drill Pipe Threading Line



防腐生产线 >>>
Anti-corrosion Coating Production Line

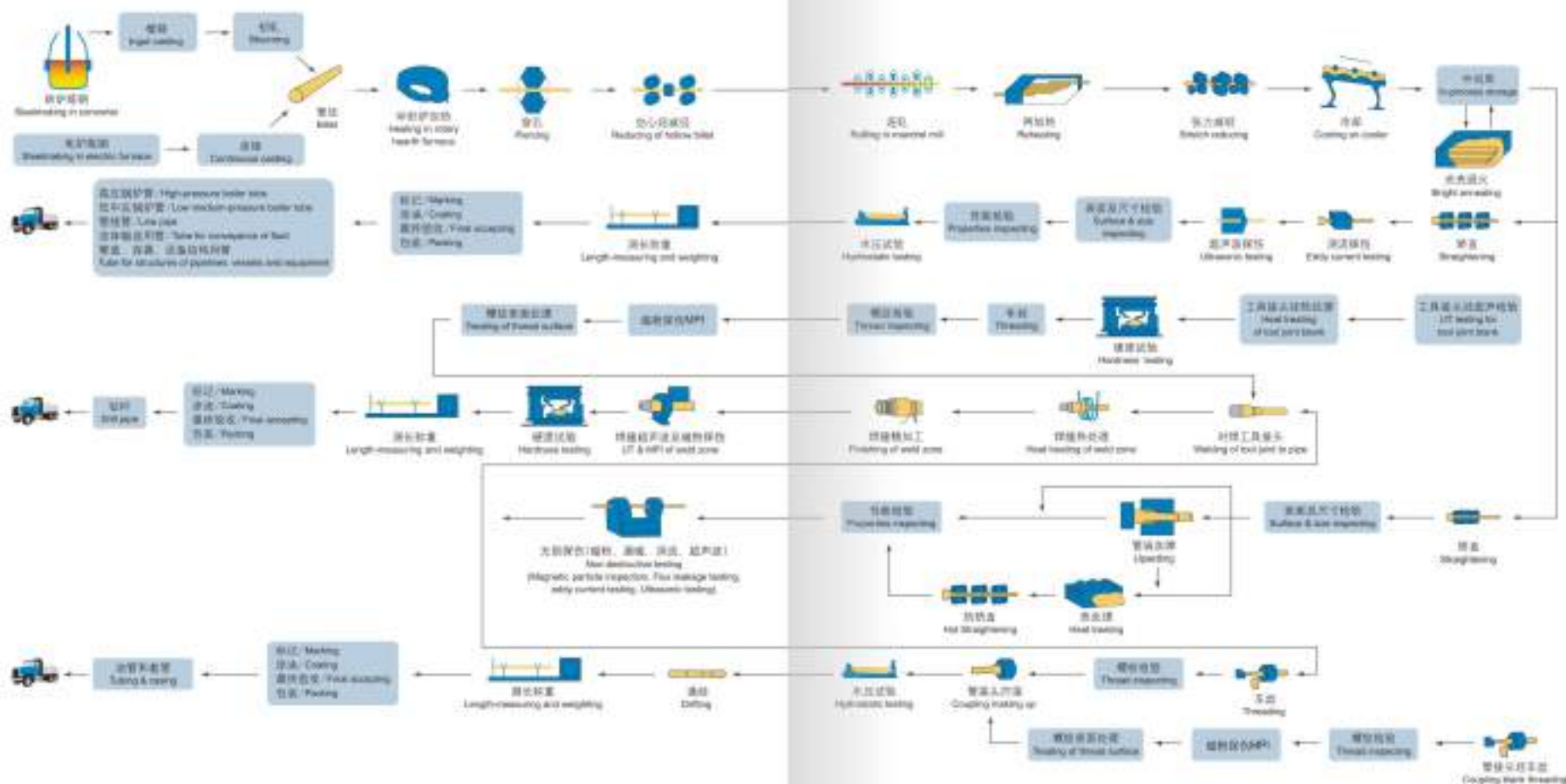


油套管加工生产线 >>>
Tubing and Casing Pipe Threading Line



生产工艺流程

Production Process Flow Chart



产品介绍 Product Introduction



油套管/Tubing and Casing

适用标准及供货技术条件

Standards and technical conditions for supply

API SPEC 5CT

ISO 13600

用途 Users:

主要用于油田中抽取石油或天然气。

亦可用于油气井的衬壁。

Tubing is used for extracting oil and gas from wells while casing for sidewall.

Casing serves as walls of a well.

规格 Dimension:

油管规格 Dimension of Tubing: OD 48.26-114.3mm WT 3.05-11mm

套管规格 Dimension of Casing: OD 114.3-508mm WT 5.21-36.13mm

钢级 Grade:

H40, J55, K55, M55, N80, L80, O80, T95, O95, P110, Q125.

接箍 Coupling:

1. 标准接箍 Standard Coupling

2. 特殊扣接箍 Special Coupling

3. 特殊倒角接箍 Special Bevel Coupling

4. 改进型密封环接箍 API Modified Seal-Bag Coupling(MB3)

5. 组合接箍或外环接箍 Combination Coupling or Beading Coupling

短节或连接管 Plug Joint or Connector:

包括右旋或左旋短节、螺柱或其他组合。

All kind of sizes, thread or other combination of tubing and casing are supplied.



长度
Length
(m)

范围/Range 1	范围/Range 2	范围/Range 3
油管/Tubing	4.10-7.32	8.54-9.75
套管/Casing	4.88-7.62	7.62-10.36
短节/Connector	0.5-6	



钻杆/Drill Pipe



适用标准及供货技术条件

Standards and technical conditions for supply

API SPEC 5DP

用途 Users:

用于钻井 For Well Drilling

注: 1. EU-外加厚EU-内加厚EU-内加厚

2. 工具接头部位有左旋螺纹和右旋螺纹两种。

3. 螺纹可镀层或磷化。

备注:

1. EU-External Upset EU-Internal-External Upset EU-

Internal Upset

2. Threads of tool joints are left-hand or right-hand

3. Threads are copper-plated or phosphated.

钢级 Grade:

E75, X85, G105, S135.

钻杆接头钢级 The wear-resistant ball of tool joint:

Acme 100ST, 200ST, 300ST, 400ST

钻杆内涂层 Internal coating drill pipe:

TK34, D9C, TC2000, TC3000

规格 Dimension:

规格/Type Size designation	公称重量 Calculated weight	工具接头型号 Tool joint designation	计算重量 Calculated weight		钢级 Grade	壁厚 Wall thickness		加厚形式(备注) Upset ends, for weld-on tool joints (see table)
			lbf	Kgms		in	mm	
2 3/8"	6.65	NC26	6.26	9.32	E.X.G.S	0.280	7.11	EU
2 3/8"	10.40	NC31	9.72	14.48	E.X.G.S	0.362	9.19	EU
3 1/2"	13.30	NC38	12.31	18.34	E.X.G.S	0.368	9.35	EU
3 1/2"	15.50	NC38/NC40	14.07	21.79	E.X.G.S	0.449	11.40	EU
4"	14.00	NC46/NC46	12.90	19.26	E.X.G.S	0.330	8.38	EU/EU
4 1/2"	16.60	NC46/NC50	14.98	22.31	E.X.G.S	0.337	8.56	EU/EU
4 1/2"	20.00	NC46/NC50	18.69	27.84	E.X.G.S	0.430	10.92	EU/EU
5"	19.50	NC50/NC52	17.90	26.71	E.X.G.S	0.362	9.19	EU
5"	25.60	NC50.5 1/2FH	24.03	35.79	E.X.G.S	0.500	12.70	EU
5 1/2"	21.90	5 1/2FH	19.80	29.51	E.X.G.S	0.361	9.17	EU
5 1/2"	24.70	5 1/2FH	22.54	33.57	E.X.G.S	0.405	10.26	EU
6 5/8"	25.20	6 5/8FH	22.19	33.0	E.X.G.S	0.330	8.38	EU
6 5/8"	27.70	6 5/8FH	24.21	40.0	E.X.G.S	0.362	9.19	EU



管线管/Line Pipe

标准 Standard:
API SPEC 5L 160 360 GOST 9711
GOST 9711.2 GOST 9711.3

用途 Uses:
用于石油、天然气、水中的气、水、液输送
For conveying gas, water and oil under
in the oil or natural gas industry

规格 Dimension:
无缝管 NBS: Φ50.3-1016 x 1.7-12mm
焊管 WBS: Φ219-2134 x 5-52mm

标准 Standard	钢管类型 Type of pipe	等级 Class	壁厚 Thickness
API SPEC 5L 160 360	无缝管 NBS	PSL1	1.2478, 1.267 X40, 1.287 X46, 1.307 X50
			1.367 X56, 1.407 X60, 1.447 X65, 1.487 X70
		PSL2	1.2478, 1.267 X40, 1.287 X46, 1.307 X50
			1.367 X56, 1.407 X60, 1.447 X65, 1.487 X70
			1.507 X76, 1.547 X80, 1.587 X85, 1.627 X90
			1.667 X95, 1.707 X100, 1.747 X105, 1.787 X110
	PSL2 现场焊接 PS22 Steel service	PSL1	1.2478, 1.267 X40, 1.287 X46, 1.307 X50
			1.367 X56, 1.407 X60, 1.447 X65, 1.487 X70
		PSL2	1.2478, 1.267 X40, 1.287 X46, 1.307 X50
			1.367 X56, 1.407 X60, 1.447 X65, 1.487 X70
			1.507 X76, 1.547 X80, 1.587 X85, 1.627 X90
			1.667 X95, 1.707 X100, 1.747 X105, 1.787 X110
GOST 9711.1	无缝管 NBS	-	1.247, 1.267, 1.287, 1.307
		PSL1	1.247, 1.267, 1.287, 1.307, 1.327, 1.347, 1.367, 1.387, 1.407, 1.427
	PSL2	-	1.247, 1.267, 1.287, 1.307
		PSL1	1.247, 1.267, 1.287, 1.307, 1.327, 1.347, 1.367, 1.387, 1.407, 1.427
		PSL2	1.247, 1.267, 1.287, 1.307, 1.327, 1.347, 1.367, 1.387, 1.407, 1.427
		PSL3	1.247, 1.267, 1.287, 1.307, 1.327, 1.347, 1.367, 1.387, 1.407, 1.427
GOST 9711.2	无缝管 NBS	-	1.247, 1.267, 1.287, 1.307
		PSL1	1.247, 1.267, 1.287, 1.307, 1.327, 1.347, 1.367, 1.387, 1.407, 1.427
	PSL2	-	1.247, 1.267, 1.287, 1.307
		PSL1	1.247, 1.267, 1.287, 1.307, 1.327, 1.347, 1.367, 1.387, 1.407, 1.427
		PSL2	1.247, 1.267, 1.287, 1.307, 1.327, 1.347, 1.367, 1.387, 1.407, 1.427
		PSL3	1.247, 1.267, 1.287, 1.307, 1.327, 1.347, 1.367, 1.387, 1.407, 1.427
GOST 9711.3	无缝管 NBS Steel service	-	1.247, 1.267, 1.287, 1.307
		PSL1	1.247, 1.267, 1.287, 1.307, 1.327, 1.347, 1.367, 1.387, 1.407, 1.427
	PSL2 Steel service	-	1.247, 1.267, 1.287, 1.307
		PSL1	1.247, 1.267, 1.287, 1.307, 1.327, 1.347, 1.367, 1.387, 1.407, 1.427
		PSL2	1.247, 1.267, 1.287, 1.307, 1.327, 1.347, 1.367, 1.387, 1.407, 1.427
		PSL3	1.247, 1.267, 1.287, 1.307, 1.327, 1.347, 1.367, 1.387, 1.407, 1.427



防腐涂层/Anti-corrosion coating

目前公司承接钢管防腐涂层项目，包括环氧富锌漆、PE、PP、PPG或其他防腐涂层；公司执行标准有：DIN30678, DIN30671, DIN30678, CANCSA-Z345.21-892, SFT4013-2002, NCT0145-87等标准。

Various steel pipe external coating projects are currently implemented by our company including single-layer/thick-layer PE, PP, PPG and other anti-corrosion coatings with the performed standards such as DIN30678, DIN30671, DIN30678, CANCSA-Z345.21-892, SFT4013-2002, NCT0145-87 etc.

涂层类型 Coating Type	涂层 Coating layer	涂层厚度 Coating thickness
3PPG(三层防腐漆) Three layer polyethylene	第一层: 环氧粉末(绿色) Isolate layer: epoxy/Green	2.0-4.5mm
	中间层: 胶粘剂(白色) Mid layer: adhesive/White	
	第三层: 聚乙烯(黑色) Outer layer: polyethylene/Black	
	第一层: 胶粘剂 Isolate layer: adhesive	
3PE(三层防腐漆) Three layer polyethylene	第一层: 环氧粉末 Isolate layer: epoxy/Green	2.0-4.5mm
	中间层: 聚乙烯 Mid layer: polyethylene	
	第三层: 胶粘剂 Outer layer: adhesive	
FBE(防腐漆) Epoxy	环氧粉末 Epoxy	200-400um
	第一层: 环氧粉末(绿色) Isolate layer: epoxy/Green	400-900um
中间层: 聚乙烯 Mid layer: polyethylene		
第三层: 环氧粉末(绿色) Outer layer: epoxy/Green		
3PPG(三层防腐漆) Three layer polyethylene	第一层: 环氧粉末(绿色) Isolate layer: epoxy/Green	2.5-3mm
	中间层: 胶粘剂(白色) Mid layer: adhesive/White	
	第三层: 聚乙烯(白色) Outer layer: polyethylene/White	
	第一层: 环氧粉末(绿色) Isolate layer: epoxy/Green	

According to the different applications and customers' requirements, we can provide various coating and lining types conforming to various international standards.



流体输送用管/Tube for Conveyance of Fluid

标准 Standard:

ASTM A 133
ASTM A 106H
JIS G 3454 JIS G 3455 JIS G 3456

用途 Uses:

用于石油、天然气输送以及其他液体输送
For conveying oil, gas and other fluids

钢级 Grade:

标准 Standard	钢级 Grade
ASTM A 53 B	A, B
ASTM A 106W	A, B, C
JIS G 3454	STPG 370, STPG 410
JIS G 3455	STPG 370, STPG 410, STPG 480
JIS G 3456	STPG 370, STPG 410, STPG 480

注: 经协商, 也可供应其他型号的钢管。

Note: Other grades of steel pipe can be made available through consultation.



机械加工用管及其他 Machining Tube and others

机械加工用管用途 Mechanical Tubing and Tube for Structure

标准 Standard:

Mechanical Tubing ASTM A519 美国材料试验协会标准 ASTM A519
American Society for Testing Material
Tube for Structures DIN 1629 德国工业标准 Deutsches Institut für Normung

用途 Uses:

Mechanical Tubing: 用于机械加工 Using for machining
Tube for Structures: 用于制造管道、容器、设备、管件及钢结构 For
manufacture of pipelines, vessels, equipment, pipe fittings and steel structures.

钢级 Grade:

Mechanical Tubing: 100, 102, 104, 121, 141, 161, 170, 181, 191, 201
Tube for Structures: S370, S440, S455, S452

钢级 Grade:

钢级 Grade	钢级 Steel grade
DN 370.15	S15.5, S16.5, S16.6, S16.8, S16.9, S17.0, S17.1, S17.2, S17.3, S17.4, S17.5, S17.6, S17.7, S17.8, S17.9, S18.0, S18.1, S18.2, S18.3, S18.4, S18.5, S18.6, S18.7, S18.8, S18.9, S19.0, S19.1, S19.2, S19.3, S19.4, S19.5, S19.6, S19.7, S19.8, S19.9, S20.0, S20.1, S20.2, S20.3, S20.4, S20.5, S20.6, S20.7, S20.8, S20.9, S21.0, S21.1, S21.2, S21.3, S21.4, S21.5, S21.6, S21.7, S21.8, S21.9, S22.0, S22.1, S22.2, S22.3, S22.4, S22.5, S22.6, S22.7, S22.8, S22.9, S23.0, S23.1, S23.2, S23.3, S23.4, S23.5, S23.6, S23.7, S23.8, S23.9, S24.0, S24.1, S24.2, S24.3, S24.4, S24.5, S24.6, S24.7, S24.8, S24.9, S25.0, S25.1, S25.2, S25.3, S25.4, S25.5, S25.6, S25.7, S25.8, S25.9, S26.0, S26.1, S26.2, S26.3, S26.4, S26.5, S26.6, S26.7, S26.8, S26.9, S27.0, S27.1, S27.2, S27.3, S27.4, S27.5, S27.6, S27.7, S27.8, S27.9, S28.0, S28.1, S28.2, S28.3, S28.4, S28.5, S28.6, S28.7, S28.8, S28.9, S29.0, S29.1, S29.2, S29.3, S29.4, S29.5, S29.6, S29.7, S29.8, S29.9, S30.0, S30.1, S30.2, S30.3, S30.4, S30.5, S30.6, S30.7, S30.8, S30.9, S31.0, S31.1, S31.2, S31.3, S31.4, S31.5, S31.6, S31.7, S31.8, S31.9, S32.0, S32.1, S32.2, S32.3, S32.4, S32.5, S32.6, S32.7, S32.8, S32.9, S33.0, S33.1, S33.2, S33.3, S33.4, S33.5, S33.6, S33.7, S33.8, S33.9, S34.0, S34.1, S34.2, S34.3, S34.4, S34.5, S34.6, S34.7, S34.8, S34.9, S35.0, S35.1, S35.2, S35.3, S35.4, S35.5, S35.6, S35.7, S35.8, S35.9, S36.0, S36.1, S36.2, S36.3, S36.4, S36.5, S36.6, S36.7, S36.8, S36.9, S37.0, S37.1, S37.2, S37.3, S37.4, S37.5, S37.6, S37.7, S37.8, S37.9, S38.0, S38.1, S38.2, S38.3, S38.4, S38.5, S38.6, S38.7, S38.8, S38.9, S39.0, S39.1, S39.2, S39.3, S39.4, S39.5, S39.6, S39.7, S39.8, S39.9, S40.0, S40.1, S40.2, S40.3, S40.4, S40.5, S40.6, S40.7, S40.8, S40.9, S41.0, S41.1, S41.2, S41.3, S41.4, S41.5, S41.6, S41.7, S41.8, S41.9, S42.0, S42.1, S42.2, S42.3, S42.4, S42.5, S42.6, S42.7, S42.8, S42.9, S43.0, S43.1, S43.2, S43.3, S43.4, S43.5, S43.6, S43.7, S43.8, S43.9, S44.0, S44.1, S44.2, S44.3, S44.4, S44.5, S44.6, S44.7, S44.8, S44.9, S45.0, S45.1, S45.2, S45.3, S45.4, S45.5, S45.6, S45.7, S45.8, S45.9, S46.0, S46.1, S46.2, S46.3, S46.4, S46.5, S46.6, S46.7, S46.8, S46.9, S47.0, S47.1, S47.2, S47.3, S47.4, S47.5, S47.6, S47.7, S47.8, S47.9, S48.0, S48.1, S48.2, S48.3, S48.4, S48.5, S48.6, S48.7, S48.8, S48.9, S49.0, S49.1, S49.2, S49.3, S49.4, S49.5, S49.6, S49.7, S49.8, S49.9, S50.0, S50.1, S50.2, S50.3, S50.4, S50.5, S50.6, S50.7, S50.8, S50.9, S51.0, S51.1, S51.2, S51.3, S51.4, S51.5, S51.6, S51.7, S51.8, S51.9, S52.0, S52.1, S52.2, S52.3, S52.4, S52.5, S52.6, S52.7, S52.8, S52.9, S53.0, S53.1, S53.2, S53.3, S53.4, S53.5, S53.6, S53.7, S53.8, S53.9, S54.0, S54.1, S54.2, S54.3, S54.4, S54.5, S54.6, S54.7, S54.8, S54.9, S55.0, S55.1, S55.2, S55.3, S55.4, S55.5, S55.6, S55.7, S55.8, S55.9, S56.0, S56.1, S56.2, S56.3, S56.4, S56.5, S56.6, S56.7, S56.8, S56.9, S57.0, S57.1, S57.2, S57.3, S57.4, S57.5, S57.6, S57.7, S57.8, S57.9, S58.0, S58.1, S58.2, S58.3, S58.4, S58.5, S58.6, S58.7, S58.8, S58.9, S59.0, S59.1, S59.2, S59.3, S59.4, S59.5, S59.6, S59.7, S59.8, S59.9, S60.0, S60.1, S60.2, S60.3, S60.4, S60.5, S60.6, S60.7, S60.8, S60.9, S61.0, S61.1, S61.2, S61.3, S61.4, S61.5, S61.6, S61.7, S61.8, S61.9, S62.0, S62.1, S62.2, S62.3, S62.4, S62.5, S62.6, S62.7, S62.8, S62.9, S63.0, S63.1, S63.2, S63.3, S63.4, S63.5, S63.6, S63.7, S63.8, S63.9, S64.0, S64.1, S64.2, S64.3, S64.4, S64.5, S64.6, S64.7, S64.8, S64.9, S65.0, S65.1, S65.2, S65.3, S65.4, S65.5, S65.6, S65.7, S65.8, S65.9, S66.0, S66.1, S66.2, S66.3, S66.4, S66.5, S66.6, S66.7, S66.8, S66.9, S67.0, S67.1, S67.2, S67.3, S67.4, S67.5, S67.6, S67.7, S67.8, S67.9, S68.0, S68.1, S68.2, S68.3, S68.4, S68.5, S68.6, S68.7, S68.8, S68.9, S69.0, S69.1, S69.2, S69.3, S69.4, S69.5, S69.6, S69.7, S69.8, S69.9, S70.0, S70.1, S70.2, S70.3, S70.4, S70.5, S70.6, S70.7, S70.8, S70.9, S71.0, S71.1, S71.2, S71.3, S71.4, S71.5, S71.6, S71.7, S71.8, S71.9, S72.0, S72.1, S72.2, S72.3, S72.4, S72.5, S72.6, S72.7, S72.8, S72.9, S73.0, S73.1, S73.2, S73.3, S73.4, S73.5, S73.6, S73.7, S73.8, S73.9, S74.0, S74.1, S74.2, S74.3, S74.4, S74.5, S74.6, S74.7, S74.8, S74.9, S75.0, S75.1, S75.2, S75.3, S75.4, S75.5, S75.6, S75.7, S75.8, S75.9, S76.0, S76.1, S76.2, S76.3, S76.4, S76.5, S76.6, S76.7, S76.8, S76.9, S77.0, S77.1, S77.2, S77.3, S77.4, S77.5, S77.6, S77.7, S77.8, S77.9, S78.0, S78.1, S78.2, S78.3, S78.4, S78.5, S78.6, S78.7, S78.8, S78.9, S79.0, S79.1, S79.2, S79.3, S79.4, S79.5, S79.6, S79.7, S79.8, S79.9, S80.0, S80.1, S80.2, S80.3, S80.4, S80.5, S80.6, S80.7, S80.8, S80.9, S81.0, S81.1, S81.2, S81.3, S81.4, S81.5, S81.6, S81.7, S81.8, S81.9, S82.0, S82.1, S82.2, S82.3, S82.4, S82.5, S82.6, S82.7, S82.8, S82.9, S83.0, S83.1, S83.2, S83.3, S83.4, S83.5, S83.6, S83.7, S83.8, S83.9, S84.0, S84.1, S84.2, S84.3, S84.4, S84.5, S84.6, S84.7, S84.8, S84.9, S85.0, S85.1, S85.2, S85.3, S85.4, S85.5, S85.6, S85.7, S85.8, S85.9, S86.0, S86.1, S86.2, S86.3, S86.4, S86.5, S86.6, S86.7, S86.8, S86.9, S87.0, S87.1, S87.2, S87.3, S87.4, S87.5, S87.6, S87.7, S87.8, S87.9, S88.0, S88.1, S88.2, S88.3, S88.4, S88.5, S88.6, S88.7, S88.8, S88.9, S89.0, S89.1, S89.2, S89.3, S89.4, S89.5, S89.6, S89.7, S89.8, S89.9, S90.0, S90.1, S90.2, S90.3, S90.4, S90.5, S90.6, S90.7, S90.8, S90.9, S91.0, S91.1, S91.2, S91.3, S91.4, S91.5, S91.6, S91.7, S91.8, S91.9, S92.0, S92.1, S92.2, S92.3, S92.4, S92.5, S92.6, S92.7, S92.8, S92.9, S93.0, S93.1, S93.2, S93.3, S93.4, S93.5, S93.6, S93.7, S93.8, S93.9, S94.0, S94.1, S94.2, S94.3, S94.4, S94.5, S94.6, S94.7, S94.8, S94.9, S95.0, S95.1, S95.2, S95.3, S95.4, S95.5, S95.6, S95.7, S95.8, S95.9, S96.0, S96.1, S96.2, S96.3, S96.4, S96.5, S96.6, S96.7, S96.8, S96.9, S97.0, S97.1, S97.2, S97.3, S97.4, S97.5, S97.6, S97.7, S97.8, S97.9, S98.0, S98.1, S98.2, S98.3, S98.4, S98.5, S98.6, S98.7, S98.8, S98.9, S99.0, S99.1, S99.2, S99.3, S99.4, S99.5, S99.6, S99.7, S99.8, S99.9, S100.0, S100.1, S100.2, S100.3, S100.4, S100.5, S100.6, S100.7, S100.8, S100.9, S101.0, S101.1, S101.2, S101.3, S101.4, S101.5, S101.6, S101.7, S101.8, S101.9, S102.0, S102.1, S102.2, S102.3, S102.4, S102.5, S102.6, S102.7, S102.8, S102.9, S103.0, S103.1, S103.2, S103.3, S103.4, S103.5, S103.6, S103.7, S103.8, S103.9, S104.0, S104.1, S104.2, S104.3, S104.4, S104.5, S104.6, S104.7, S104.8, S104.9, S105.0, S105.1, S105.2, S105.3, S105.4, S105.5, S105.6, S105.7, S105.8, S105.9, S106.0, S106.1, S106.2, S106.3, S106.4, S106.5, S106.6, S106.7, S106.8, S106.9, S107.0, S107.1, S107.2, S107.3, S107.4, S107.5, S107.6, S107.7, S107.8, S107.9, S108.0, S108.1, S108.2, S108.3, S108.4, S108.5, S108.6, S108.7, S108.8, S108.9, S109.0, S109.1, S109.2, S109.3, S109.4, S109.5, S109.6, S109.7, S109.8, S109.9, S110.0, S110.1, S110.2, S110.3, S110.4, S110.5, S110.6, S110.7, S110.8, S110.9, S111.0, S111.1, S111.2, S111.3, S111.4, S111.5, S111.6, S111.7, S111.8, S111.9, S112.0, S112.1, S112.2, S112.3, S112.4, S112.5, S112.6, S112.7, S112.8, S112.9, S113.0, S113.1, S113.2, S113.3, S113.4, S113.5, S113.6, S113.7, S113.8, S113.9, S114.0, S114.1, S114.2, S114.3, S114.4, S114.5, S114.6, S114.7, S114.8, S114.9, S115.0, S115.1, S115.2, S115.3, S115.4, S115.5, S115.6, S115.7, S115.8, S115.9, S116.0, S116.1, S116.2, S116.3, S116.4, S116.5, S116.6, S116.7, S116.8, S116.9, S117.0, S117.1, S117.2, S117.3, S117.4, S117.5, S117.6, S117.7, S117.8, S117.9, S118.0, S118.1, S118.2, S118.3, S118.4, S118.5, S118.6, S118.7, S118.8, S118.9, S119.0, S119.1, S119.2, S119.3, S119.4, S119.5, S119.6, S119.7, S119.8, S119.9, S120.0, S120.1, S120.2, S120.3, S120.4, S120.5, S120.6, S120.7, S120.8, S120.9, S121.0, S121.1, S121.2, S121.3, S121.4, S121.5, S121.6, S121.7, S121.8, S121.9, S122.0, S122.1, S122.2, S122.3, S122.4, S122.5, S122.6, S122.7, S122.8, S122.9, S123.0, S123.1, S123.2, S123.3, S123.4, S123.5, S123.6, S123.7, S123.8, S123.9, S124.0, S124.1, S124.2, S124.3, S124.4, S124.5, S124.6, S124.7, S124.8, S124.9, S125.0, S125.1, S125.2, S125.3, S125.4, S125.5, S125.6, S125.7, S125.8, S125.9, S126.0, S126.1, S126.2, S126.3, S126.4, S126.5, S126.6, S126.7, S126.8, S126.9, S127.0, S127.1, S127.2, S127.3, S127.4, S127.5, S127.6, S127.7, S127.8, S127.9, S128.0, S128.1, S128.2, S128.3, S128.4, S128.5, S128.6, S128.7, S128.8, S128.9, S129.0, S129.1, S129.2, S129.3, S129.4, S129.5, S129.6, S129.7, S129.8, S129.9, S130.0, S130.1, S130.2, S130.3, S130.4, S130.5, S130.6, S130.7, S130.8, S130.9, S131.0, S131.1, S131.2, S131.3, S131.4, S131.5, S131.6, S131.7, S131.8, S131.9, S132.0, S132.1, S132.2, S132.3, S132.4, S132.5, S132.6, S132.7, S132.8, S132.9, S133.0, S133.1, S133.2, S133.3, S133.4, S133.5, S133.6, S133.7, S133.8, S133.9, S134.0, S134.1, S134.2, S134.3, S134.4, S134.5, S134.6, S134.7, S134.8, S134.9, S135.0, S135.1, S135.2, S135.3, S135.4, S135.5, S135.6, S135.7, S135.8, S135.9, S136.0, S136.1, S136.2, S136.3, S136.4, S136.5, S136.6, S136.7, S136.8, S136.9, S137.0, S137.1, S137.2, S137.3, S137.4, S137.5, S137.6, S137.7, S137.8, S137.9, S138.0, S138.1, S138.2, S138.3, S138.4, S138.5, S138.6, S138.7, S138.8, S138.9, S139.0, S139.1, S139.2, S139.3, S139.4, S139.5, S139.6, S139.7, S139.8, S139.9, S140.0, S140.1, S140.2, S140.3, S140.4, S140.5, S140.6, S140.7, S140.8, S140.9, S141.0, S141.1, S141.2, S141.3, S141.4, S141.5, S141.6, S141.7, S141.8, S141.9, S142.0, S142.1, S142.2, S142.3, S142.4, S142.5, S142.6, S142.7, S142.8, S142.9, S143.0, S143.1, S143.2, S143.3, S143.4, S143.5, S143.6, S143.7, S143.8, S143.9, S144.0, S144.1, S144.2, S144.3, S144.4, S144.5, S144.6, S144.7, S144.8, S144.9, S145.0, S145.1, S145.2, S145.3, S145.4, S145.5, S145.6, S145.7, S145.8, S145.9, S146.0, S146.1, S146.2, S146.3, S146.4, S146.5, S146.6, S146.7, S146.8, S146.9, S147.0, S147.1, S147.2, S147.3, S147.4, S147.5, S147.6, S147.7, S147.8, S147.9, S148.0, S148.1, S148.2, S148.3, S148.4, S148.5, S148.6, S148.7, S148.8, S148.9, S149.0, S149.1, S149.2, S149.3, S149.4, S149.5, S149.6, S149.7, S149.8, S149.9, S150.0, S150.1, S150.2, S150.3, S150.4, S150.5, S150.6, S150.7, S150.8, S150.9, S151.0, S151.1, S151.2, S151.3, S151.4, S151.5, S151.6, S151.7, S151.8, S151.9, S152.0, S152.1, S152.2, S152.3, S152.4, S152.5, S152.6, S152.7, S152.8, S152.9, S153.0, S153.1, S153.2, S153.3, S153.4, S153.5, S153.6, S153.7, S153.8, S153.9, S154.0, S154.1, S154.2, S154.3, S154.4, S154.5, S154.6, S154.7, S154.8, S154.9, S155.0, S155.1, S155.2, S155.3, S155.4, S155.5, S155.6, S155.7, S155.8, S155.9, S156.0, S156.1, S156.2, S156.3, S156.4, S156.5, S156.6, S156.7, S156.8, S156.9, S157.0, S157.1, S157.2, S157.3, S157.4, S157.5, S157.6, S157.7, S157.8, S157.9, S158.0, S158.1, S158.2, S158.3, S158.4, S158.5, S158.6, S158.7, S158.8, S158.9, S159.0, S159.1, S159.2, S159.3, S159.4, S159.5, S159.6, S159.7, S159.8, S159.9, S160.0, S160.1, S160.2, S160.3, S160.4, S160.5, S160.6, S160.7, S160.8, S160.9, S161.0, S161.1, S161.2, S161.3, S161.4, S161.5, S161.6, S161.7, S161.8, S161.9, S162.0, S162.1, S162.2, S162.3, S162.4, S162.5, S162.6, S162.7, S162.8, S162.9, S163.0, S163.1, S163.2, S163.3, S163.4, S163.5, S163.6, S163.7, S163.8, S163.9, S164.0, S164.1, S164.2, S164.3, S164.4, S164.5, S164.6, S164.7, S164.8, S164.9, S165.0, S165.1, S165.2, S165.3, S165.4, S165.5, S165.6, S165.7, S165.8, S165.9, S166.0, S166.1, S166.2, S166.3, S166.4, S166.5, S166.6, S166.7, S166.8, S166.9, S167.0, S167.1, S167.2, S167.3, S167.4, S167.5, S167.6, S167.7, S167.8, S167.9, S168.0, S168.1, S168.2, S168.3, S168.4, S168.5, S168.6, S168.7, S168.8, S168.9, S169.0, S169.1, S169.2, S169.3, S169.4, S169.5, S169.6, S169.7, S169.8, S169.9, S170.0, S170.1, S170.2, S170.3, S170.4, S170.5, S170.6, S170.7, S170.8, S170.9, S171.0, S171.1, S171.2, S171.3, S171.4, S171.5, S171.6, S171.7, S171.8, S171.9, S172.0, S172.1, S172.2, S172.3, S172.4, S172.5, S172.6, S172.7, S172.8, S172.9, S173.0, S173.1, S173.2, S173.3, S173.4, S173.5, S173.6, S173.7, S173.8, S173.9, S174.0, S174.1, S174.2, S174.3, S174.4, S174.5, S174.6, S174.7, S174.8, S174.9, S175.0, S175.1, S175.2, S175.3, S175.4, S175.5, S175.6, S175.7, S175.8, S175.9, S176.0, S176.1, S176.2, S176.3, S176.4, S176.5, S176.6, S176.7, S176.8, S176.9, S177.0, S177.1, S177.2, S177.3, S177.4, S177.5, S177.6, S177.7, S177.8, S177.9, S178.0, S178.1, S178.2, S178.3, S178.4, S178.5, S178.6, S178.7, S178.8, S178.9, S179.0, S179.1, S179.2, S179.3, S179.4, S179.5, S179.6, S179.7, S179.8, S179.9, S180.0, S180.1, S180.2, S180.3, S180.4, S180.5, S180.6, S180.7, S180.8, S180.9, S181.0, S181.1, S181.2, S181.3, S181.4, S181.5, S181.6, S181.7, S181.8, S181.9, S182.0, S182.1, S182.2, S182

质量保证
Quality Assurance



公司获得了ISO9001质量管理体系证书
ISO14001环境管理体系证书
公司产品获得的认证证书主要有：
油管、套管、钻杆和套管等石油管材获得美国石油学会API颁发的5CT、5DP、5L合格使用许可证
锅炉压力容器管道元件制造许可证
结构管获得欧盟CE认证



The company has been accredited with ISO9001 Quality Management System and ISO14001 Environmental Management System.
Main certifications for our steel pipe products comprise:
Oil tubing, casing, drill pipe and line pipe series licensed with American Petroleum Institute's API Spec 5CT, API Spec 5DP and API Spec 5L respectively.
Boiler pipe licensed with National Pressure Pipe & Special Equipment Manufacturing Permit.
Structural pipe certified with CE.



检测设备 Detection equipment

公司为确保产品质量与合格产品出厂，并因此配备了一系列产品检测设备，如涡流探伤仪，在线超声波探伤仪、水压试验机等等，建立了检测中心、理化试验中心等，配备先进的检测设备，保证了合格产品的出厂。

Compared to ensure product quality and consistency of manufactured products, has invested heavily in a range of products testing equipment such as Eddy Current Testing Machine, online ultrasonic flaw detector, hydro testing machine, the establishment of a testing center, physical and chemical test center. These sophisticated testing equipment to ensure that the qualified factory.



佰仕达已经建立了广泛的国际销售网络，客户遍及中东、东南亚、非洲及美洲等区域。我们是中国主要的石油专用管（OCTG）和石油天然气输送用管线的出口商之一。我们2010年、2011年的钢管出口总量创中国湖南省外贸行业钢管出口之最，而我们将会通过不断扩展国际市场以实现持续增长。

Bestar has set up extensive international sales network covering Middle East, Southeast Asia, South Africa, Europe, the Americas etc. As one of the major exporters of OCTG and line pipe for crude oil and natural gas delivery in China, Bestar's exports of steel pipe has remained top in Hunan Province for years. And we will keep growing and expanding the global market.



EGPC & Dublin Petroleum Project

Product Name	Standard	Grade	Size	Qty(MT)	Country
Tubing/Coing	API 5CT	X80	204.40*10.00 177.819.29 88.950.43	665	Egypt



ONGC Project

Product Name	Standard	Grade	Size	Qty(MT)	Country
Tubing/Coing	API 5CT	X80	88.919.40 177.819.19	1320	India



ONGC Project

Product Name	Standard	Grade	Size	Qty(MT)	Country
Coing	API 5CT	K55	508*12.7	1676	Nigeria



CPTDC Algeria Project

Product Name	Standard	Grade	Size	Qty(MT)	Country
Coing	API 5CT	K55	134.311.70	680	Algeria



CCED Pipeline Project: FARHA Water Injection

Product Name	Standard	Grade	Size	Qty(MT)	Country
SRLO	API 5L	G. 8.750.2	134.719.30	735	Israel



Berths 8,9 Damietta Port Egypt

Product Name	Standard	Grade	Size	Qty(MT)	Country
SRLO	API 5L	G. 8	168.714	486	Egypt



Construction of Seawater Cooling Pumphouse, Jubail

Product Name	Standard	Grade	Size	Qty(MT)	Country
SRLO	API 5L	S32 094.2	21.377*1314200	200	KSA



Oman-Salah Port: Cargo & Liquid Terminal

Product Name	Standard	Grade	Size	Qty(MT)	Country
SMLA	API 5L	S32 094.2	41.477*3046500	200	KSA

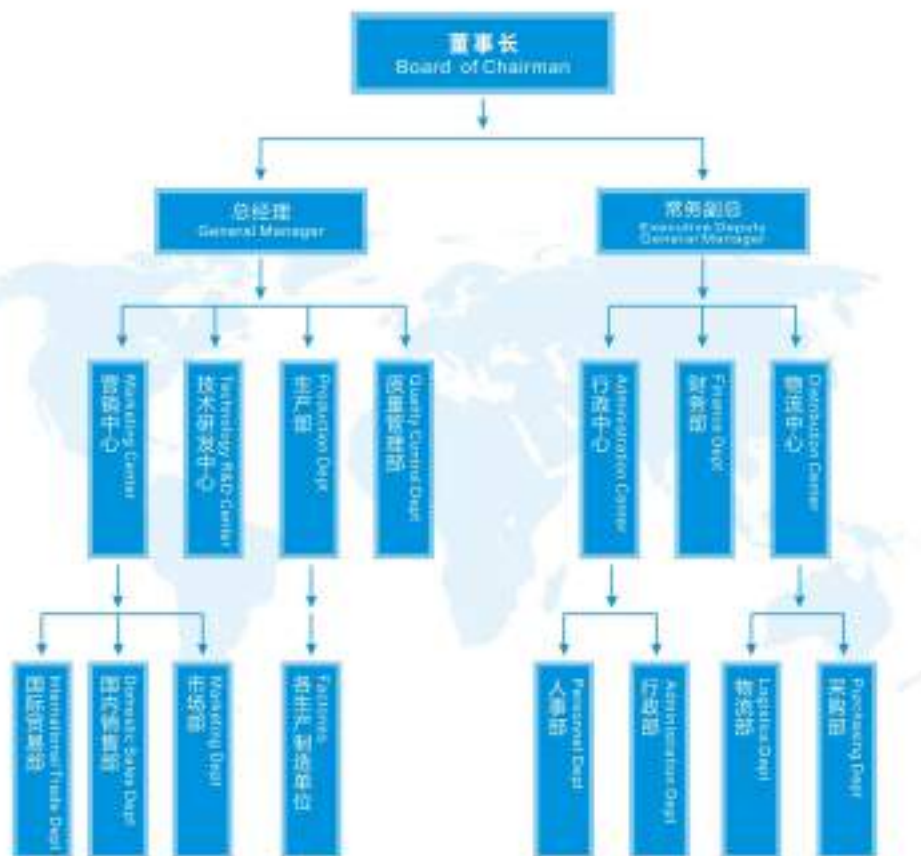




公司架构 Organization Framework

科学严谨的组织结构，使得生产、销售、研发等各环节构成系统化的作业流程，在工作人员高效率运转。

Under scientific organizational structure, producing, marketing and developing make up a systematic process, and the working staff running efficiently.



联系我们 Contact us

Bestar Steel Co., Ltd
Web: <http://www.bestarpipe.com>
Head Office Address: 22nd Floor, Royal Wing Tower, Longchamp International Building, No.9 Xiangfu Road, Yuhua District, Changsha, Hunan, China
Postcode: 410116

Overseas Sales Department:
Tel: 0086-731-88678531, 88678532, 88678533,
88678538, 88706080, 88706081
Fax: 0086-731-88678531
Email: sales@bestarpipe.com

Quality Control Department:
Tel: 0086-731-88678512
Email: quality@bestarpipe.com

Production Department:
Tel: 0086-731-82169980
Email: production@bestarpipe.com

Technology R&D Center:
Tel: 0086-731-88678506

Financial Department:
Tel: 0086-731-88706082

Purchasing Department:
Tel: 0086-731-88678544

Logistics Department:
Tel: 0086-731-88678566

Administration Department:
Tel: 0086-731-84459688